

**FORNOVOGAS**  
WE MOVE ENERGY



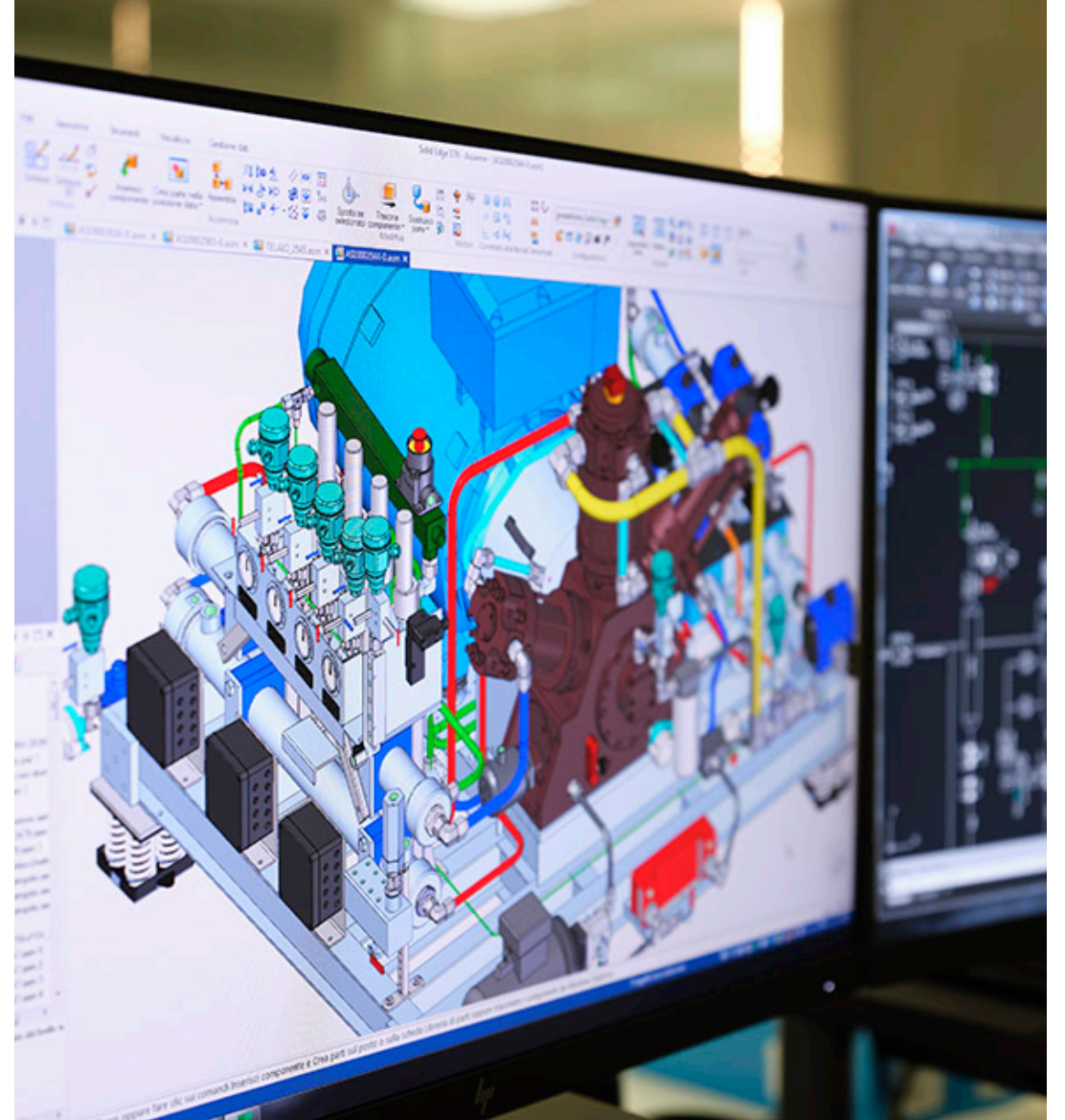
OUR GAS SOLUTION FOR INDUSTRY,  
OIL&GAS AND POWER GENERATION

# OUR HEADQUARTER





# OUR ENGINEERING DEPARTMENT





# OUR PLANT





# OUR HISTORY

**2004**

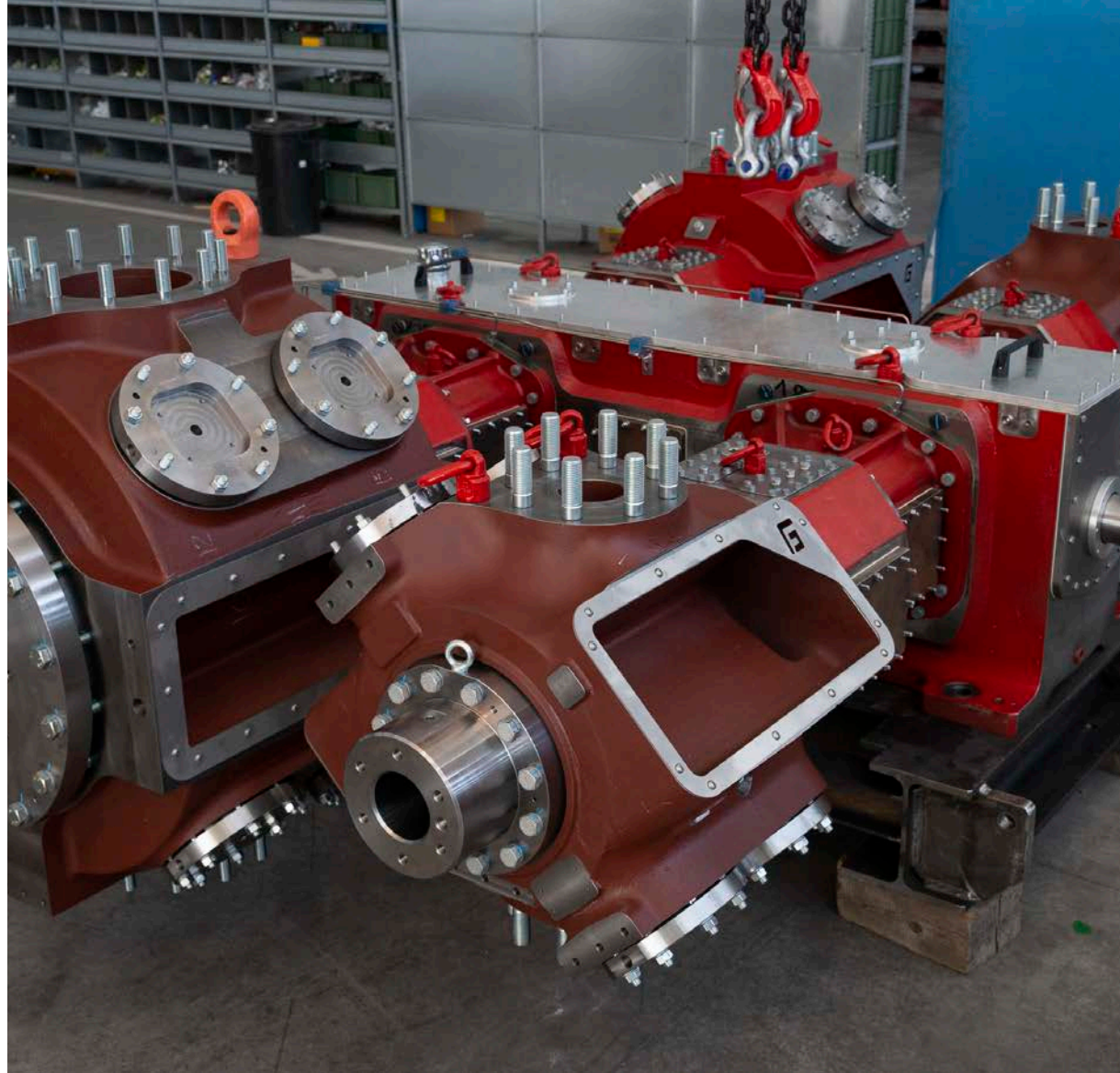
First reciprocating compressor fully developed under Fornovo Gas technology

**2009**

First OIL FREE reciprocating compressors

**2017**

1.000th compressor



**2018**

Latest compressor internally developed: DA500, with a power up to 1MW

**2020**

New reciprocating compressors for carbon dioxide

**2021**

New reciprocating compressor range for hydrogen

# OUR GROWTH

More than 2000 compressors installed worldwide in different configurations and in the most challenging environmental conditions

More than 110 people working

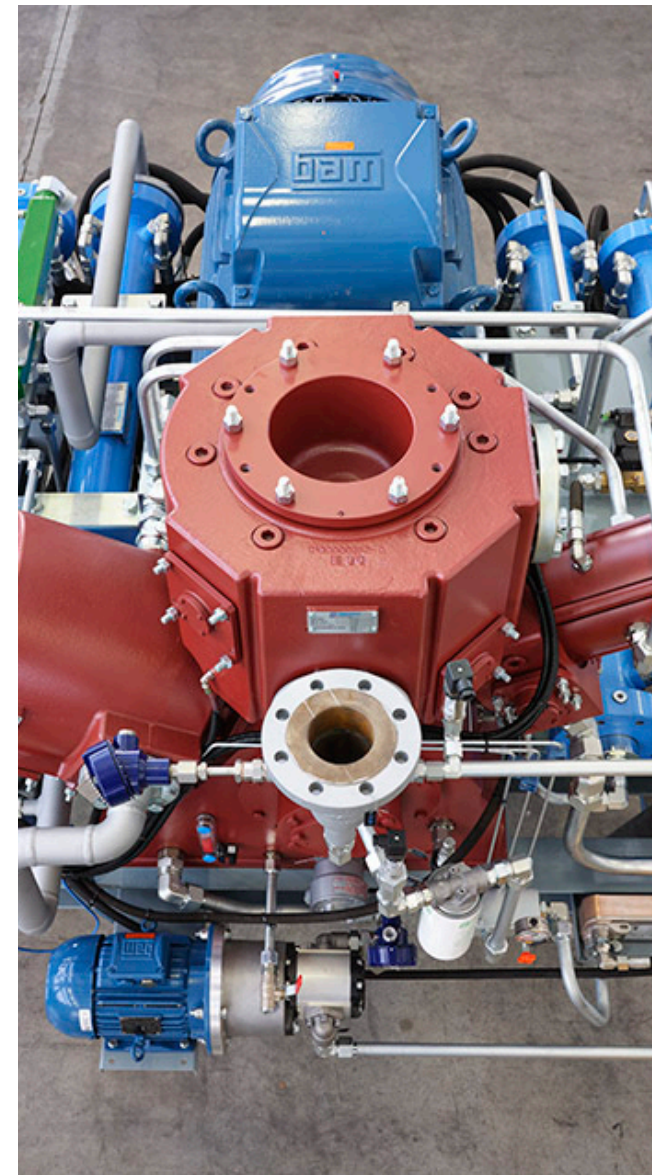
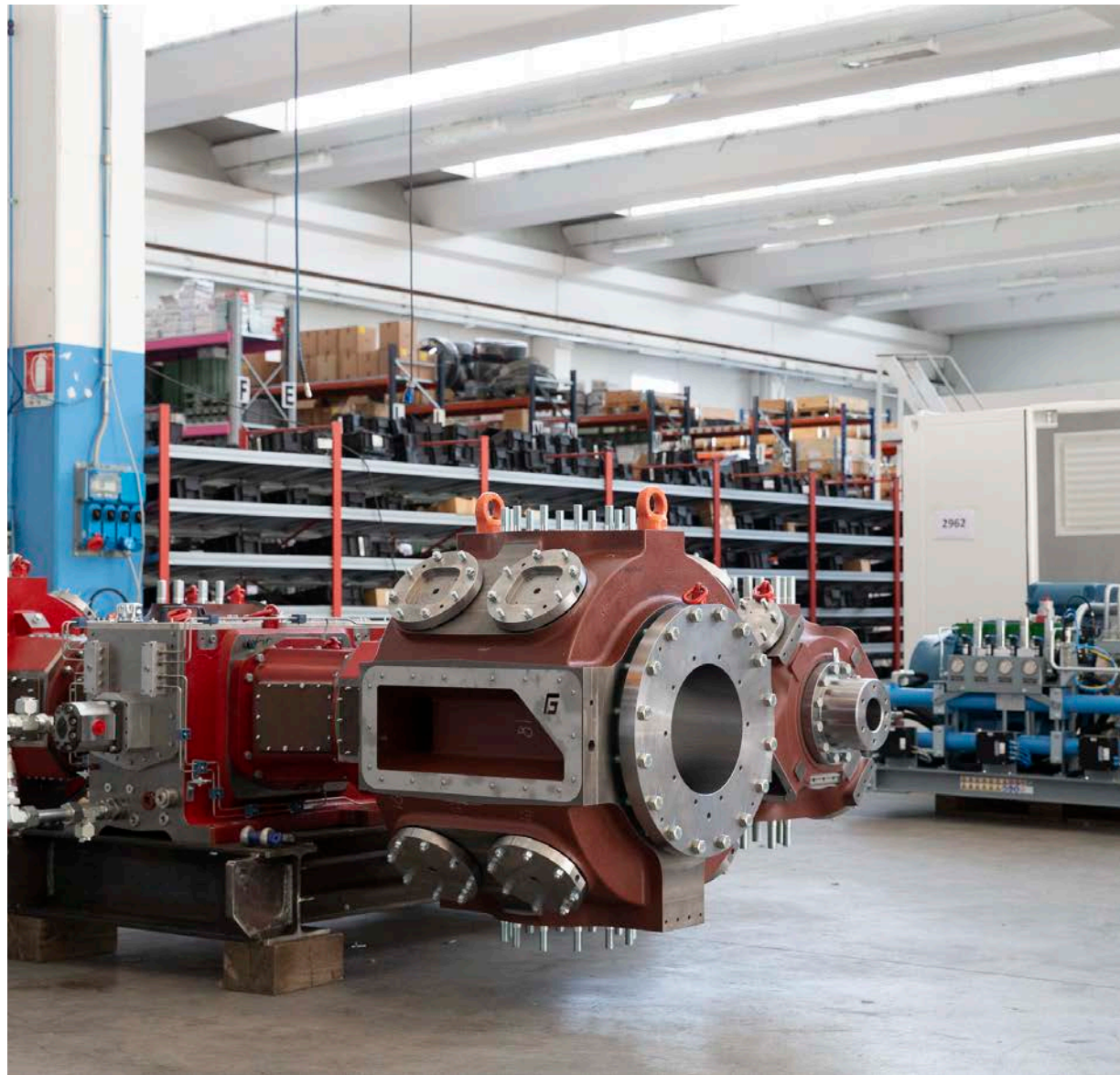
More than 20% growing rate every year

Annual production over 200 bare compressors and about 100 compressors skids per year.





# OUR COMPRESSORS





# INDUSTRIAL APPLICATIONS

**Petrochemical plants**



**Gas separation**



**LNG Plant**





# INDUSTRIAL APPLICATIONS

**Refinery**



**Power Plant**



**Offshore FPSO**





# OUR SOLUTIONS



**Fuel gas boosting**

**Wellhead and well depletion**

**Gas storage injection and lift**

**Flare and vent gas recovery**

**Refinery/Minery/ Gas services**

**LNG production plant**

**Technical gases**



# THE GAS

Natural gas (dry or wet) Carbon Dioxide Hydrogen  
Raw Biogas Sour gas Propane Nitrogen Argon Syngas

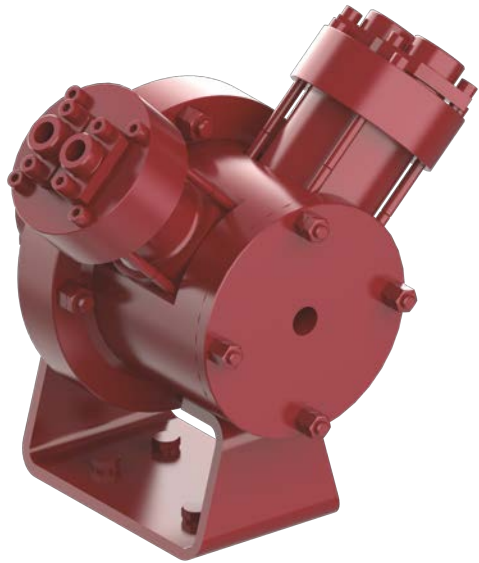




# COMPRESSOR FEATURES PRODUCT RANGE

## SA50

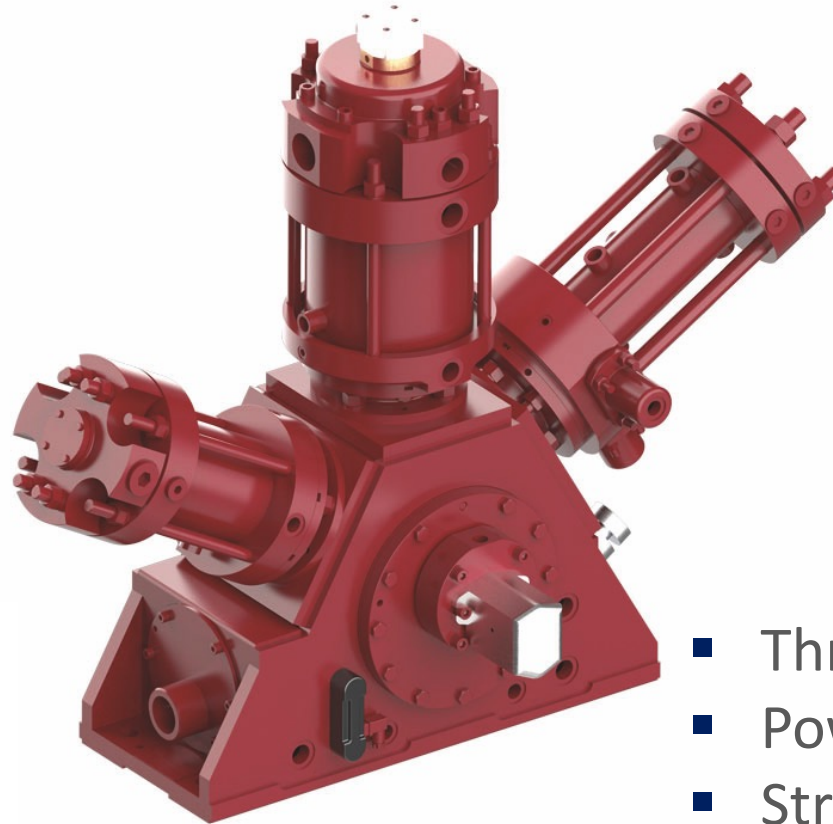
*GAS RECOVERY COMPRESSOR*



- Throws: 2
- Power: 2,2 kW
- Stroke: 40 mm
- Gas rod load: 2 kN

## SA200

*POWER OUTPUT UP TO 55 kW*



- Throws: 1 to 3
- Power: 22 - 55 kW
- Stroke: 65 mm
- Gas rod load: 15 kN



# COMPRESSOR FEATURES PRODUCT RANGE

## **DA300**

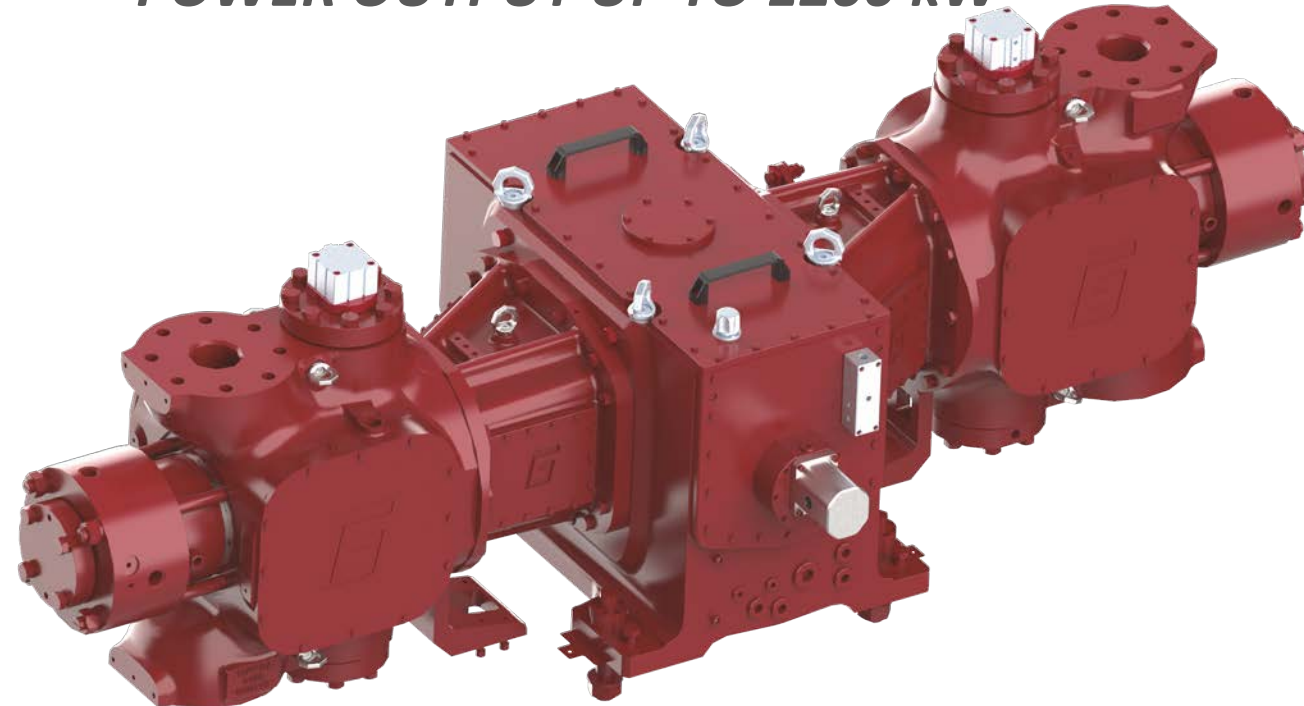
*POWER OUTPUT UP TO 400 kW*



- Throws: 1 to 6
- Power: 55 - 355 kW
- Stroke: 100 mm
- Gas rod load: 50 kN

## **DA500**

*POWER OUTPUT UP TO 1200 kW*



- Throws: 1 to 4
- Power: 200 - 1200 kW
- Stroke: 80-90-110 mm
- Gas rod load: 125 kN



# COMPRESSOR FEATURES FOR INDUSTRIAL APPLICATIONS

A close-up photograph of an industrial compressor unit. The image shows several circular pressure gauges with white faces and black markings, mounted on a metallic surface. Red-handled valves are visible in the background, and blue hoses are connected to the system. The overall scene is brightly lit, highlighting the metallic textures and the precision of the equipment.

Lubricated and Non lubricated configuration

Optional distance piece

Compressor layout W-shape or Horizontal configuration

Wide range of operating pressure from 1 up to over 5000 psig

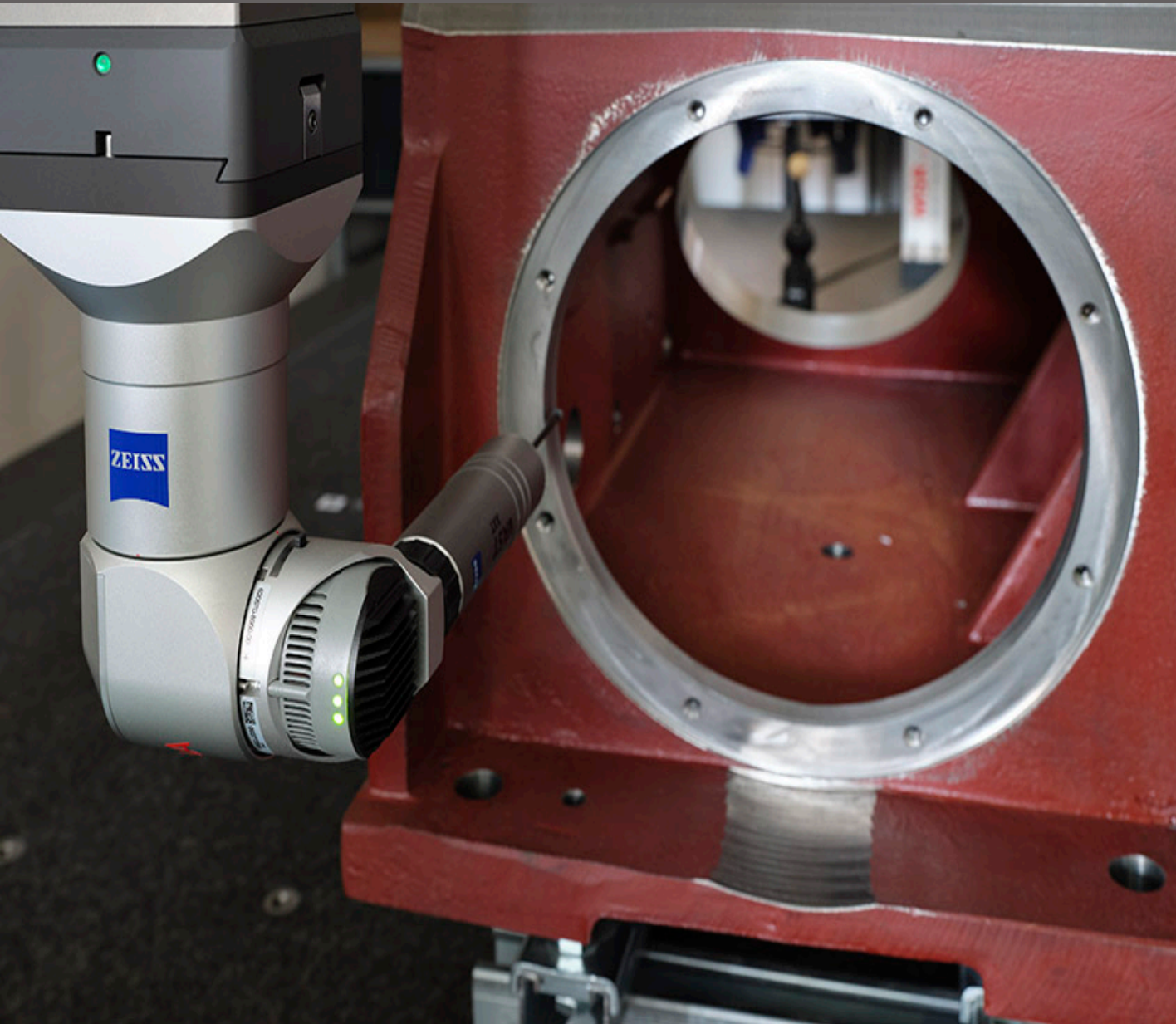
Speed range 600 - 1800 rpm

Direct coupling (electrical or gas engine driven)

Tailor made solution



# OUR QUALITY







Quality Management system certified  
ISO9001:2015

Environmental Management certified  
ISO14001:2015

Health and Safety Management certified  
ISO45001:2018

3D quality control on each critical  
component through Carl Zeiss technology

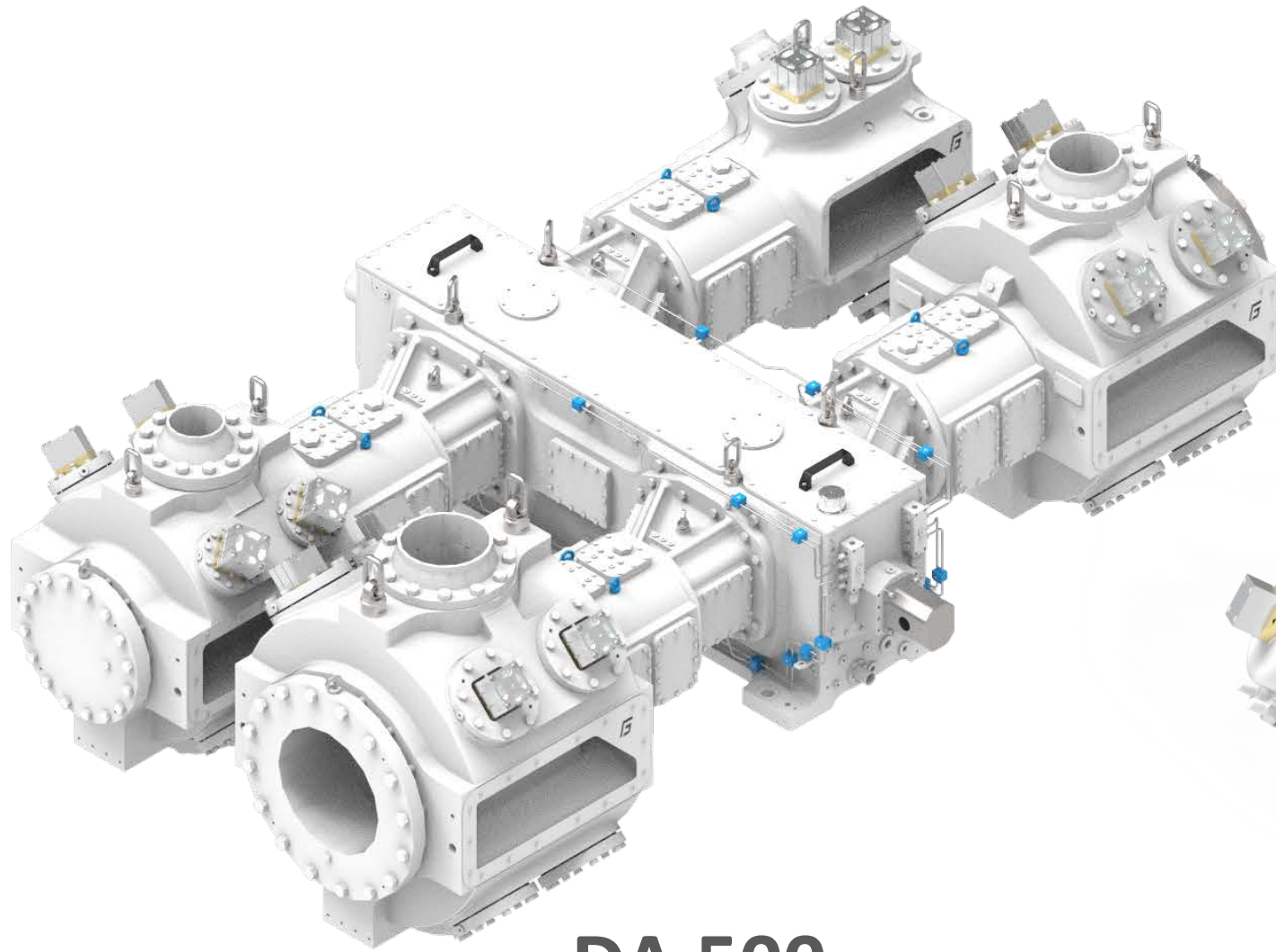
Hydraulic test performed on all pressure  
equipment

Regular audit to main suppliers

FAT performed on each compressor



# HYDROGEN RANGE

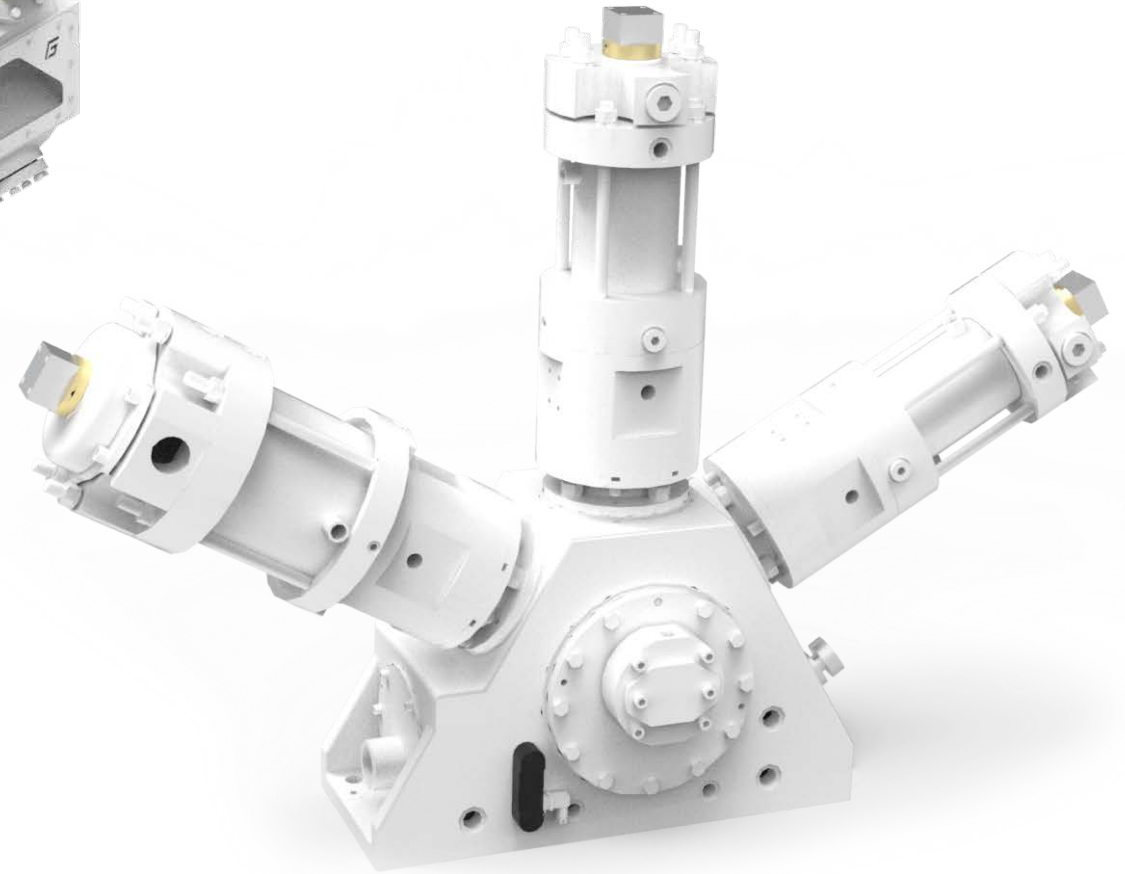


**DA 500**

**1200 kW - 100 Bar – up to 3000 Kg/h**

**SA 200**

**55 kW - 100 Bar - up to 100 Kg/h**





THANK YOU!

**FORNOVOGAS**  
**WE MOVE ENERGY**



ALWAYS BY YOUR SIDE



LEGAL AND OPERATIONAL  
HEADQUARTERS

Via Ponticelli, 5-7

43029 – Traversetolo (PR) Italy

Tel +39 0521 1553844

Fax +39 0521 1523066

[info@fornovogas.it](mailto:info@fornovogas.it)



FORNOVO GAS SPA